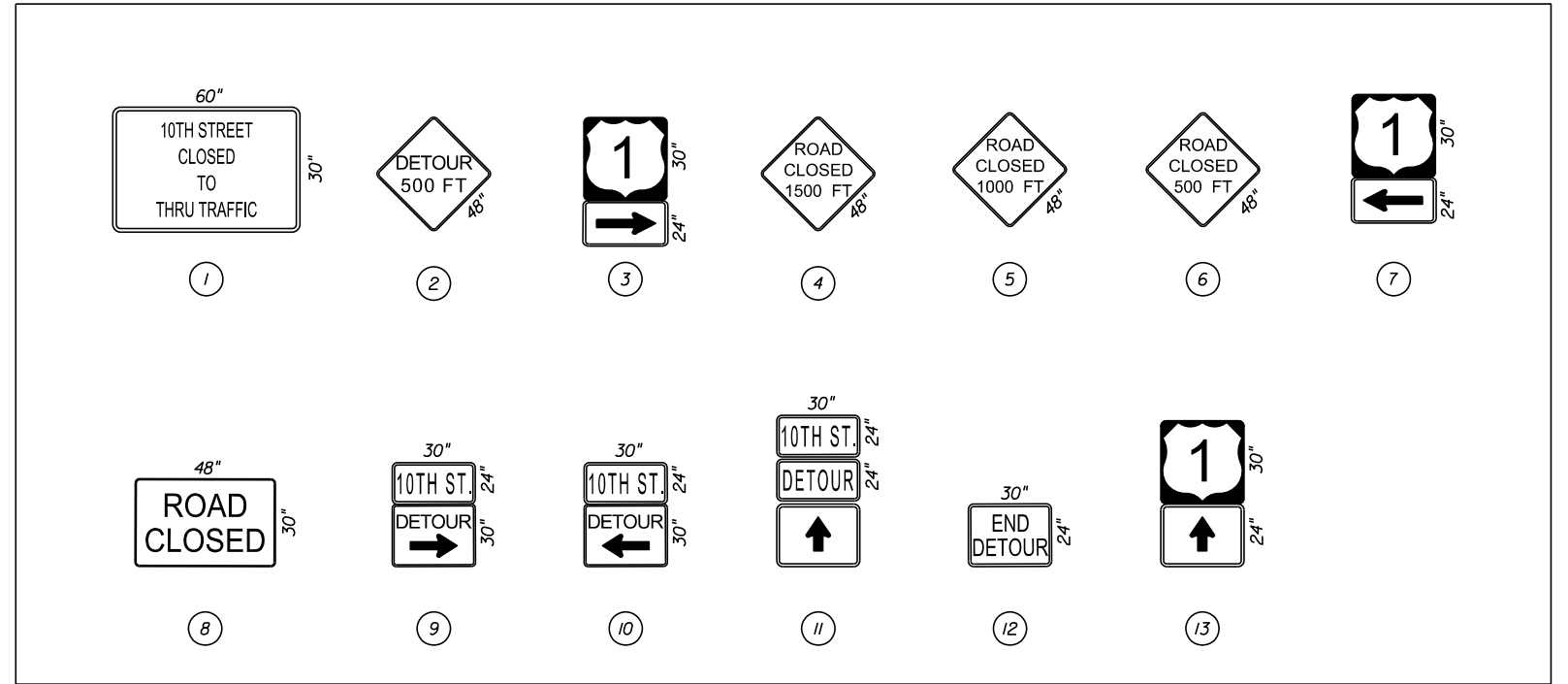


SIGN LEGEND

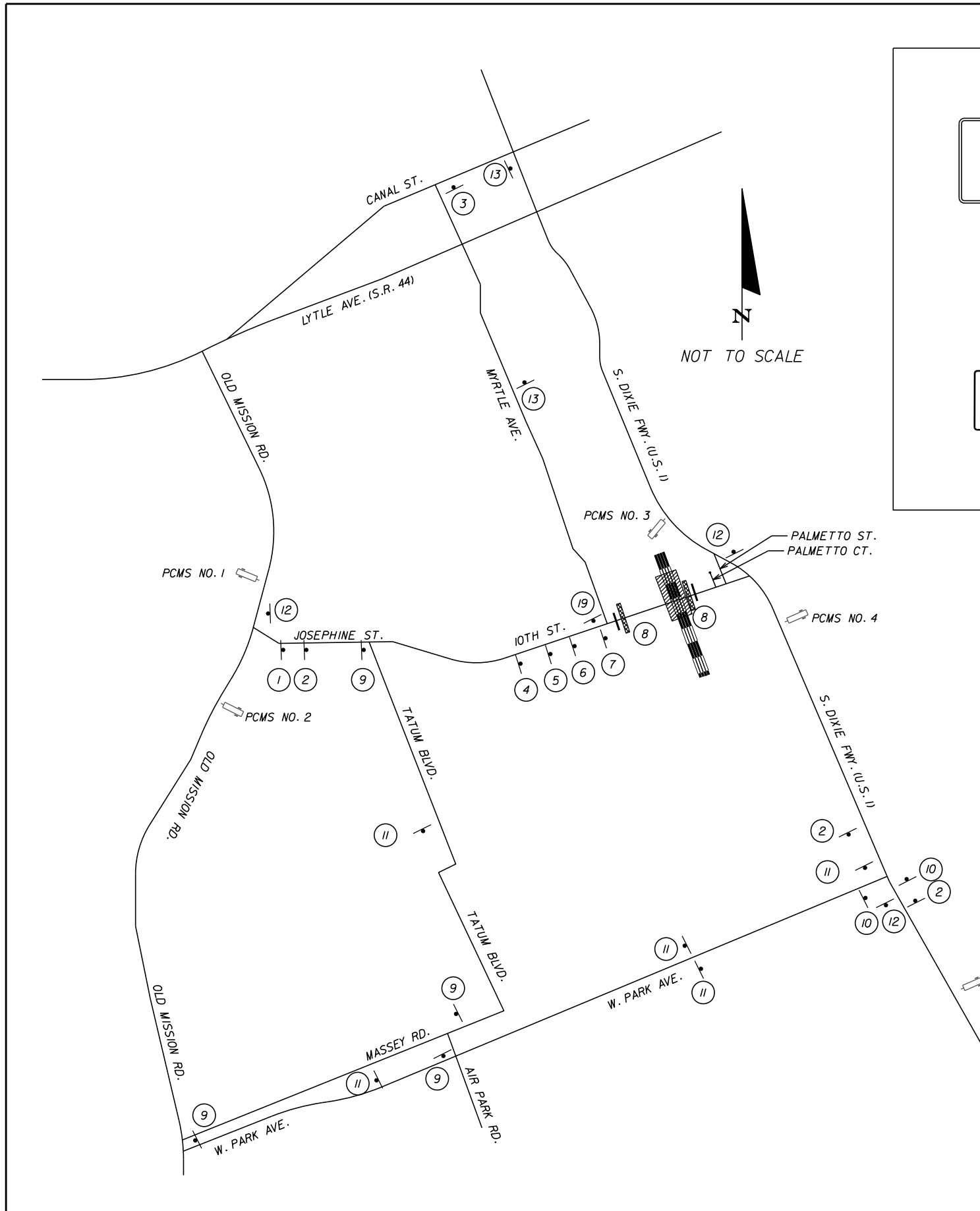


PCMS NO. 1 AND 2
 MSG 1
 LINE 1 : 10TH ST
 LINE 2 : CLSED AT
 LINE 3 : MYRTLE
 MSG 2 :
 LINE 1 : USE WEST
 LINE 2 : PARK AVE

PCMS NO. 3 AND NO. 4
 MSG 1 :
 LINE 1 : 10TH ST
 LINE 2 : CLSED AT
 LINE 3 : RR XING

PCMS NO. 5
 MSG 1 :
 LINE 1 : 10TH ST
 LINE 2 : CLSED AT
 LINE 3 : RR XING
 MSG 2 :
 LINE 1 : USE WEST
 LINE 2 : PARK AVE

- TYPE III BARRICADES W/ FLASHING BEACON
- ROADS
- SIGN MOUNTED ON TYPE 3 BARRICADE
- WORK AREA
- SIGN ASSEMBLY
- FEC RAILWAY
- PORTABLE CHANGEABLE MESSAGE SIGN (PCMS)
- * CROSSING TO BE CONSTRUCTED BY FEC RAILWAY'S CONTRACTOR



REVISIONS				MICHAEL L. MOHLER, P.E. P.E. NO. 52034 CONSOR ENGINEERS, LLC. 1511 EAST SR 434, SUITE 1001 WINTER SPRINGS, FLORIDA 32708 CERTIFICATE OF AUTHORIZATION: 6876	10TH STREET VOLUSIA COUNTY, FL ENGINEERING DEPARTMENT	PHASE 2 * FEC RAILWAY CROSSING CONSTRUCTION DETOUR PLAN	SHEET NO.
DATE	DESCRIPTION	DATE	DESCRIPTION				73

THE OFFICIAL RECORD OF THIS SHEET IS THE ELECTRONIC FILE DIGITALLY SIGNED AND SEALED UNDER RULE 61G15-23.004, F.A.C.